



# Special bespoke services for professionals

2025 rates and terms





# Contents

---

<b>Introduction</b>	<b>3</b>
<b>1. Vehicle rental</b>	<b>4</b>
1.1 Buses	5
1.2 Metro	8
1.3 Montjuïc Funicular	10
<b>2. Facility rental</b>	<b>12</b>
2.1 Metro stations	13
2.2 Montjuïc Funicular	15
2.4 Offices	17
2.5 Unique spaces	19
<b>3. Assignment of maps</b>	<b>21</b>
3.1 Bus	22
3.2 Metro	24



## Introduction

---

We define special services as those aimed at professionals or companies that require the exclusive use of a **TMB** asset for a limited period of time. These services are always on a one-off basis and always different, and they are custom-designed according to the needs and conditions of each case.

Several departments of the **TMB** are involved in special services, including operations, railway safety, civil protection, occupational risk prevention, legal, and insurance. For this reason, the management time can vary greatly depending on the services requested. From one to three weeks for the simplest to three or more weeks for the most complex.

To be able to perform a special service, it is necessary to:

**1. Have a civil liability insurance policy.**

**2. Fill in a business activities report, which details, among other things:**

- Compliance with TMB security protocols and regulations.
- Identification of individuals involved on the day of the service (72 hours before it, at the latest)

**3. Make payment in advance (at least 7 working days before the date the service is to be carried out)**

The prices and conditions for services listed in this document are reviewed and updated annually."





# 1

---

## Vehicle rental



# 1.1 Buses

Conventional Line

- Standard
- Articulated
- Bus del Barri (Neighbourhood bus)

Historical buses







## Exclusive Transport

Type	Description		
Scheduled service vehicles (minimum 4 h) (**)	Standard Bus	Weekdays/Daytime (5 am - 10 pm)	106€/h.
		Saturdays, Public holidays and Night-time (10 pm - 5 am)	145€/h.
	Articulated Bus	Weekdays/Daytime (5 am - 10 pm)	123€/h.
		Saturdays, Public holidays and Night-time (10 pm - 5 am)	148€/h.
	Bus del Barri neighbourhood bus	Weekdays/Daytime (5 am - 10 pm)	88€/h.
		Saturdays, Public holidays and Night-time (10 pm - 5 am)	96€/h.
Classic Buses (Minimum 4 h)	3 h operational - 4 h in service	961.20 €/h. + 735.17€ <sup>(*)</sup> <sup>(**)</sup>	
	7 h operational - 8 h in service	745.20 €/h. + 735.17€ <sup>(*)</sup> <sup>(**)</sup>	
<b>(*) Conservation of Historical Heritage:</b> Insurance (traffic, passenger, material damage to historical heritage), maintenance, continuous training for drivers, cleaning and disinfection.			
Complementary services	Managers or related personnel		74€/h.
	Stop installation		€639
	Preparation of front sign		€166
	Cost of sign per bus		€18
	Route diversion		€365
	Stop Cancellation		€300

(\*\*) 30 minutes of entry and 30 minutes of garage exit will be added. In the case of electric buses, it would be 45 minutes of entry and 45 minutes of garages. For the calculation of the fees/time of electric buses, the € 7.5 will be increased in the case of standard electric buses and € 8.5 with respect to articulated electric buses.



## Audiovisual activities (Film or Photo Shoots)

Type	Description	
Scheduled service vehicles (minimum 4 h) (**)	Outdoor (up to 4 h)	679€/h.
	Outdoor (4 to 10 h)	408€/h.
	Outdoor (over 10 h)	340€/h.
	In depots or facilities associated with TMB	1,089€/h.
Classic Buses (minimum 4 h)	Outdoor (up to 4 h)	920.16€/h. + 735.17€(*)
	Outdoor (4 to 10 h)	552.96€/h. + 735.17€(*)
	Outdoor (over 10 h)	460.08€/h. + 735.17€(*)

(\*) **Conservation of Historical Heritage:** Insurance (traffic, passenger, material damage to historical heritage), maintenance, continuous training for drivers, cleaning and disinfection.

Complementary services	Recording Image rights	€218
	Managers or related personnel	€74
	Stop installation	€639
	Preparation of front sign	€166
	Cost of sign per bus	€18
	Route diversion	€365
	Stop Cancellation	€300

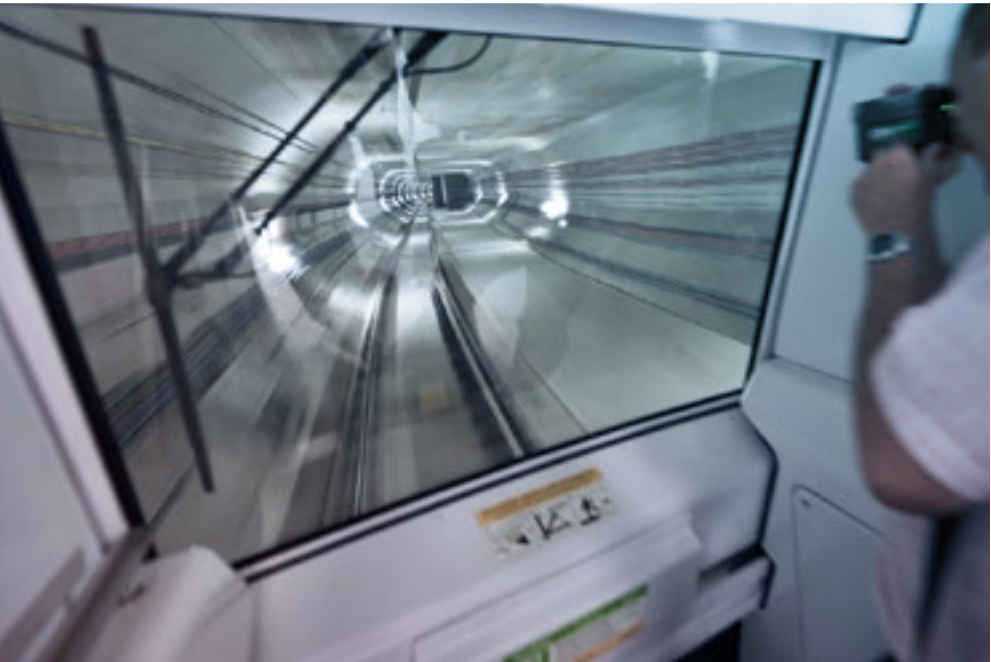
(\*\*) 30 minutes of entry and 30 minutes of garage exit will be added. In the case of electric buses, it would be 45 minutes of entry and 45 minutes of garages. For the calculation of the fees/time of electric buses, the € 7.5 will be increased in the case of standard electric buses and € 8.5 with respect to articulated electric buses.



# 1.2 Metro

---

## Trains







## Audiovisual activities (Film or Photo Shoots)

### Description

Trains out of service (*) (minimum 2h)	1,815€/h.
Trains in service (**) (1h)	493€/h.

### Events

#### Description

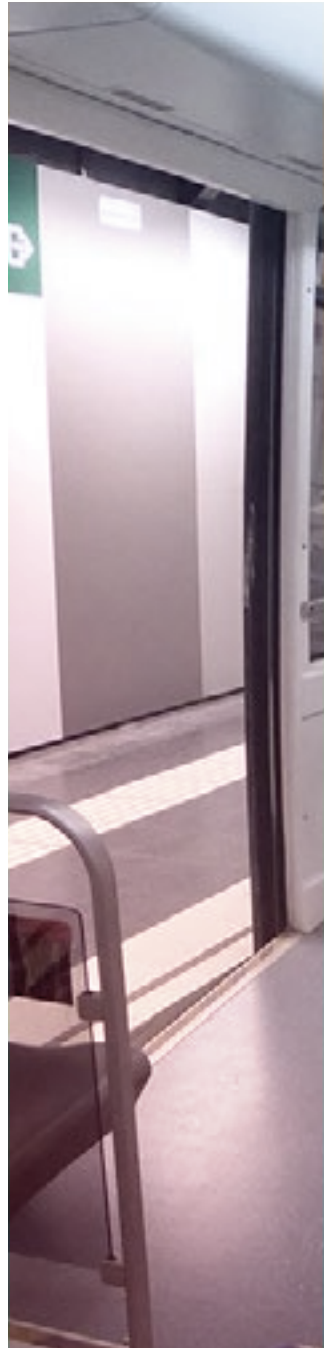
With trains out of service (*) (minimum 2 h)	1,815€/h.
--	-----------

**(\*) With trains out of service:**

- Monday to Wednesday and between 12.45 and 4.30 am.
- Entry to the station shall be supervised by TMB staff and/or the security staff required for the service.

**(\*\*) With trains in service:**

- Shooting is allowed on trains as long as it is not a nuisance to passengers.
- No tripods, spotlights or booms may be set up.
- The crew should comprise a maximum of 4-5 people.
- Monday to Thursday and between 10 and 4 pm.



# 1.3 Montjuïc Funicular

Trains







## Exclusive Transport

### Description

Funicular out of service (*) (minimum 2 h)	1,997€/h..
--	------------

## Audiovisual activities (Film or Photo Shoots)

### Description

Funicular out of service (*) (minimum 2 h)	1,997€/h..
Funicular in service (**) (1 h)	493€/h.

## Events

### Description

Funicular out of service (*) (minimum 2 h)	1,997€/h..
--	------------

#### (\*) With the Funicular out of service:

- Monday to Thursday and between 12.45 and 4.30 am.
- Entry to the station shall be supervised by TMB staff and/or the security staff required for the service.

#### (\*\*) With the Funicular in service:

- Shooting is allowed on trains as long as it is not a nuisance to passengers.
- No tripods, spotlights or booms may be set up.
- The crew should comprise a maximum of 4-5 people.
- Monday to Thursday and between 10 and 4 pm.





# 2

---

## Facility rental



# 2.1 Metro Stations







## Audiovisual activities (Film or Photo Shoots)

### Description

Outside operating hours (*) (minimum 2 h)	1,089€/h.
Operating (**) (1 h)	493€/h.
In service with fixed perimeter assignment (***)	787€/h.

## Events

### Description

Outside operating hours (*) (minimum 2 h)	1.089 €/h
In service hours and with possible disruptions	From €1,089, please enquire (****)

#### (\*) With the station out of service:

- Monday to Thursday and between 12.45 and 4.30 am.
- Entry to the station shall be supervised by TMB staff and/or the security staff required for the service.

#### (\*\*) With the station in service:

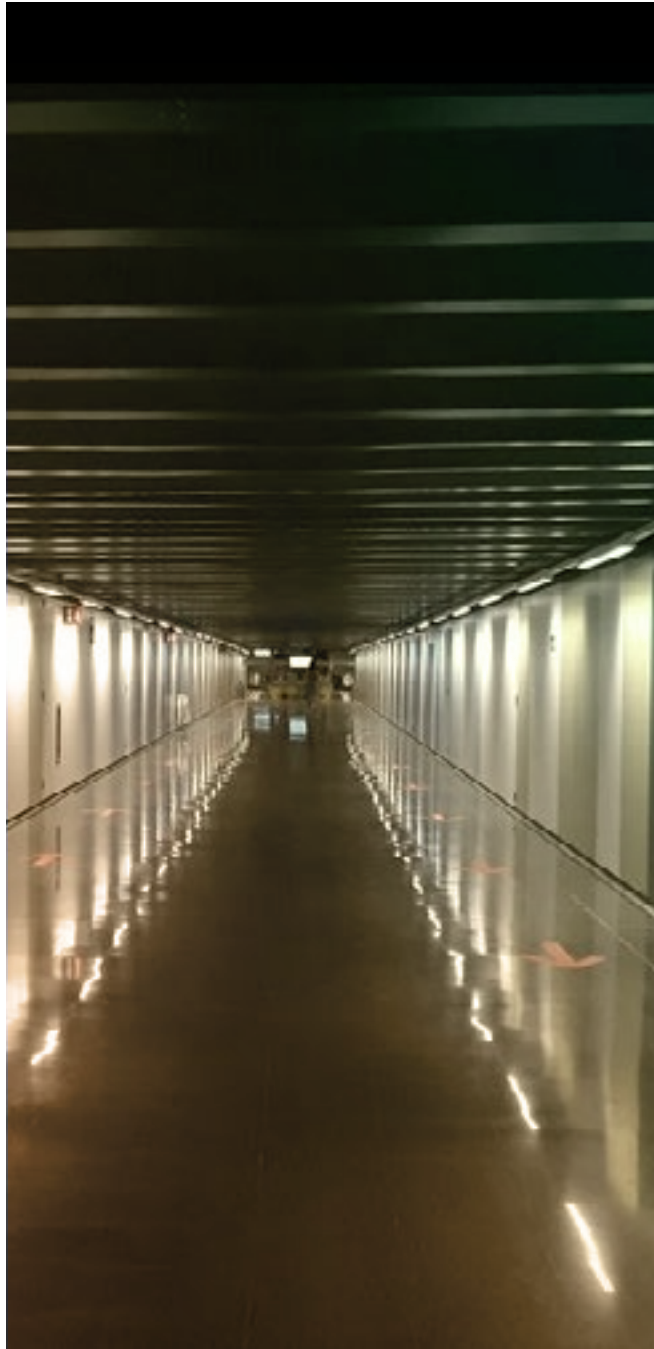
- Monday to Thursday and between 10 am and 4 pm.
- A ticket is required to access the station.
- Shooting is allowed on trains as long as it is not a nuisance to passengers.
- No tripods, spotlights or booms may be set up.
- The crew should comprise a maximum of 4-5 people.

#### (\*\*\*) With the station in service and perimeter assignment:

- This takes place at a pre-arranged location at the station chosen for the shoot.
- Tripods, booms and spotlights are allowed.
- Filming outside the predetermined location is not permitted.
- Film crews generally comprise a maximum of 10 people.
- Monday to Thursday and between 10 and 4 pm.

(\*\*\*\*) Depending on the characteristics of the station, the line, volume of passengers, safety, cleanliness or disinfection, among others.





## 2.2 Montjuïc Funicular

Facilities





## Audiovisual activities (Film or Photo Shoots)

### Description

Outside operating hours (*) (minimum 2 h)	1,997€/h.
Operating (**) (1 h)	493€/h.
In service with fixed perimeter assignment (***)	787€/h.

## Events

### Description

Outside operating hours (*) (minimum 2 h)	1,997€/h.
In service hours and with possible disruptions	From €1,997, please enquire (****)

#### (\*) With the Funicular out of service:

- Monday to Thursday and between 12.45 and 4.30 am.
- Entry to the station shall be supervised by TMB staff and/or the security staff required for the service.

#### (\*\*) With the Funicular in service:

- Monday to Wednesday and between 10 am and 4 pm.
- A ticket is required to access the station.
- Shooting is allowed on trains as long as it is not a nuisance to passengers.
- No tripods, spotlights or booms may be set up.
- The crew should comprise a maximum of 4-5 people.

#### (\*\*\*) With the Funicular in service and perimeter assignment:

- This takes place at a pre-arranged location at the station chosen for the shoot.
- Tripods, booms and spotlights are allowed.
- Filming outside the predetermined location is not permitted.
- Film crews generally comprise a maximum of 10 people.
- Monday to Thursday and between 10 and 4 pm.

(\*\*\*\*) Depending on the characteristics of the service, volume of passengers, safety, cleanliness or disinfection, among others.





## 2.4 Offices

Facilities







## Audiovisual activities (Film or Photo Shoots)

### Description

Outside operating hours (minimum 2 h)	<b>787€/h.</b>
In service with fixed perimeter assignment (*)	<b>1,089€/h.</b>

## Events

### Description

Outside operating hours (minimum 2 h)	<b>787€/h.</b>
In service with fixed perimeter assignment (*)	<b>1,089€/h.</b>

**(\*) With the installations in service and perimeter assignment:**

- This takes place at a pre-arranged location at the station chosen for the shoot.
- Tripods, booms and spotlights are allowed.
- Filming outside the predetermined location is not permitted.
- Film crews generally comprise a maximum of 10 people.



## 2.5 Unique spaces

Metro and bus depots  
“Ghost” stations  
Emergency exits  
Tunnels  
Commercial premises  
Underground galleries...







## Audiovisual activities (Film or Photo Shoots)

### Description

Without disrupting the service

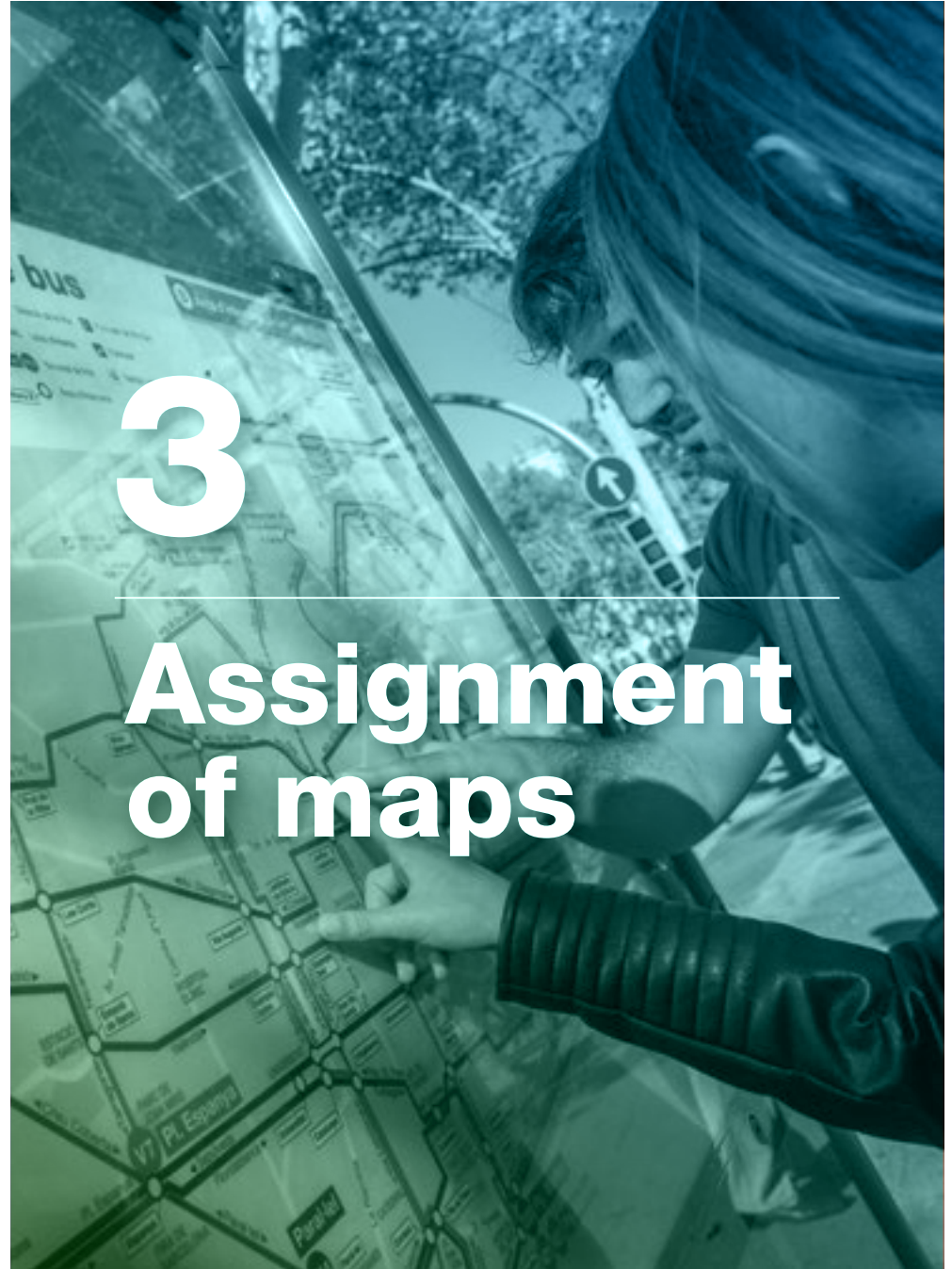
[Please enquire](#)

## Celebració d'Esdeveniments

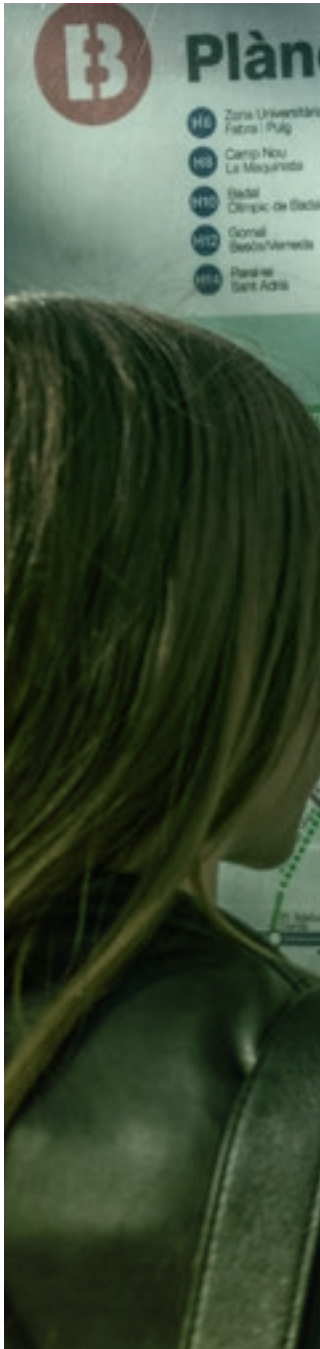
### Description

Without disrupting the service

[Please enquire](#)







# 3.1 Bus

<https://www.tmb.cat/en/barcelona-transport>  
<https://www.tmb.cat/en/about-tmb>





## Assignment of maps

### Description

One year of Intellectual Property assignment. Amount based on geographic coverage

Barcelona: €230

Spain: €345

Europe: €517.5

Worldwide: €875





# 3.2 Metro

<https://www.tmb.cat/en/barcelona-transport>





## Assignment of maps

### Description

One year of Intellectual Property assignment. Amount based on geographic coverage

---

Barcelona: **€230**

---

Spain: **€345**

---

Europe: **€517.5**

---

Worldwide: **€875**

---





## Technical visits

These are work meetings, each lasting one hour and limited to six people. Visitors can take photographs and measurements of our vehicles or facilities, respecting image rights and privacy, always accompanied by TMB technical staff.

Technical visits also involve several TMB departments, so their management time may vary depending on the space or vehicle requested. This may range from a minimum of one week to two or more weeks.

**A technical visit costs €258 and will be deducted from the total cost of the service.** If more than one technical visit is made, only the cost of the first visit will be deducted.

---

## Contact details:

[ServeisEspecials@tmb.cat](mailto:ServeisEspecials@tmb.cat)

*The prices in this document are exclusive of VAT.*